



HPC Cloud IaaS

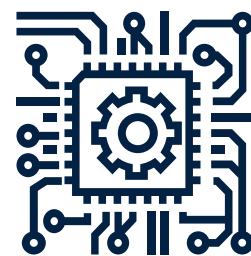
Pain Points



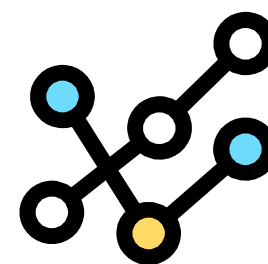
Virtual Cluster
Deployment and
Scaling



Expandable and
Compatible
Storage Systems



Parallel
Computing
CPU/GPU
Environments



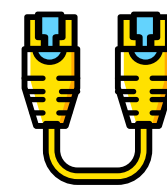
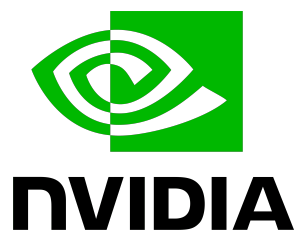
High Speed
Networking
Support



Hyper-Converged
Infrastructure

Features

Efficient
Processing &
Acceleration

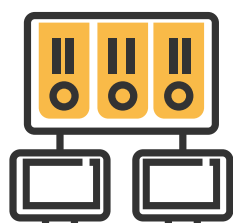


InfiniBand

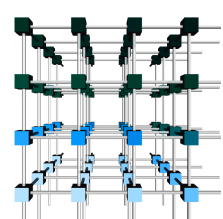
100GbE

High-Speed
Network

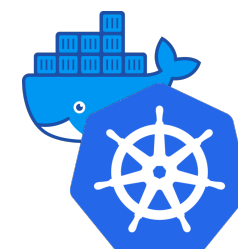
Cluster
Topology



Fat Tree
Topology

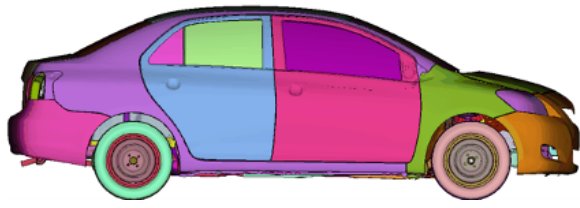


Torus
Interconnect

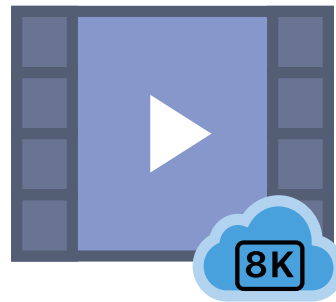


Parallel
Computing
Platform

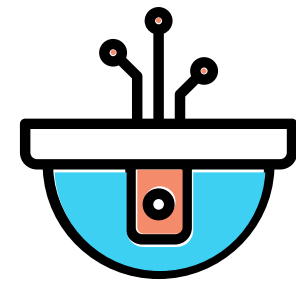
Applications



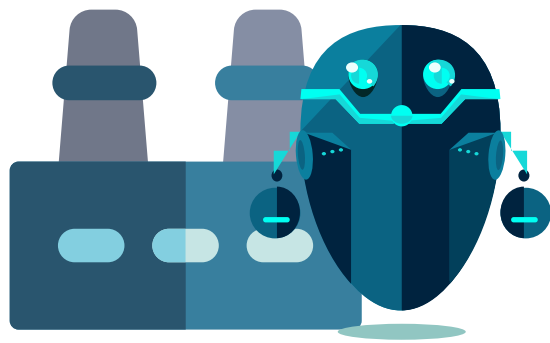
Science and Engineering



High Resolution Video Processing



Smart Surveillance



Industrial Automation



Smart Healthcare



Next-Generation Sequencing

Solution Details

Network Configuration

- 100Gbps IB High Speed Network
- 10GbE Management Network
- 1GbE BMC Network

Infiniband (IB) RDMA

- Direct memory transfer to different hosts
- Supported with GRPC/MPI Protocol

User Interface

- VM Management Interface
- VM Security Settings
- VM Console Access

Data Storage

1. Resizable Block Storage

2. Cloud Object Storage

- x3 Replication for Data Redundancy
- Web Scale Object Storage
- Usage based availability and billing
- Compatible with Amazon S3 protocol

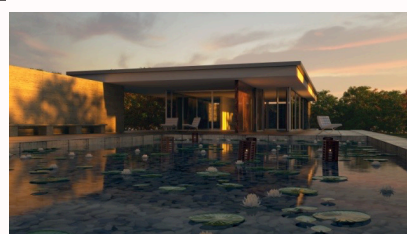
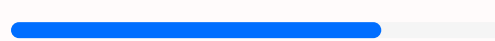
3. Lustre Data Storage

- File Level Redundancy
- Mounted to VM using a high-speed computer-specific transmission protocol
- High Throughput & Low Latency
- Project based storage sharing

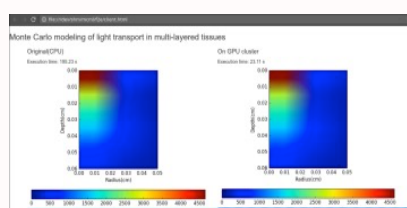
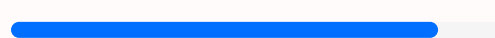
Solution Benefits

Performance Speed-Up

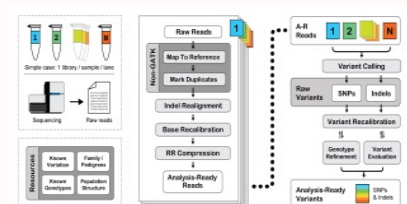
Rendering x200



Radiation Therapy Simulation x235



Tumor Genome Sequencing x250



Cost Flexible

- Save up-to 40% on compute costs
- Flexible payment plans
- No hidden costs



Tier III Certified

Uptime

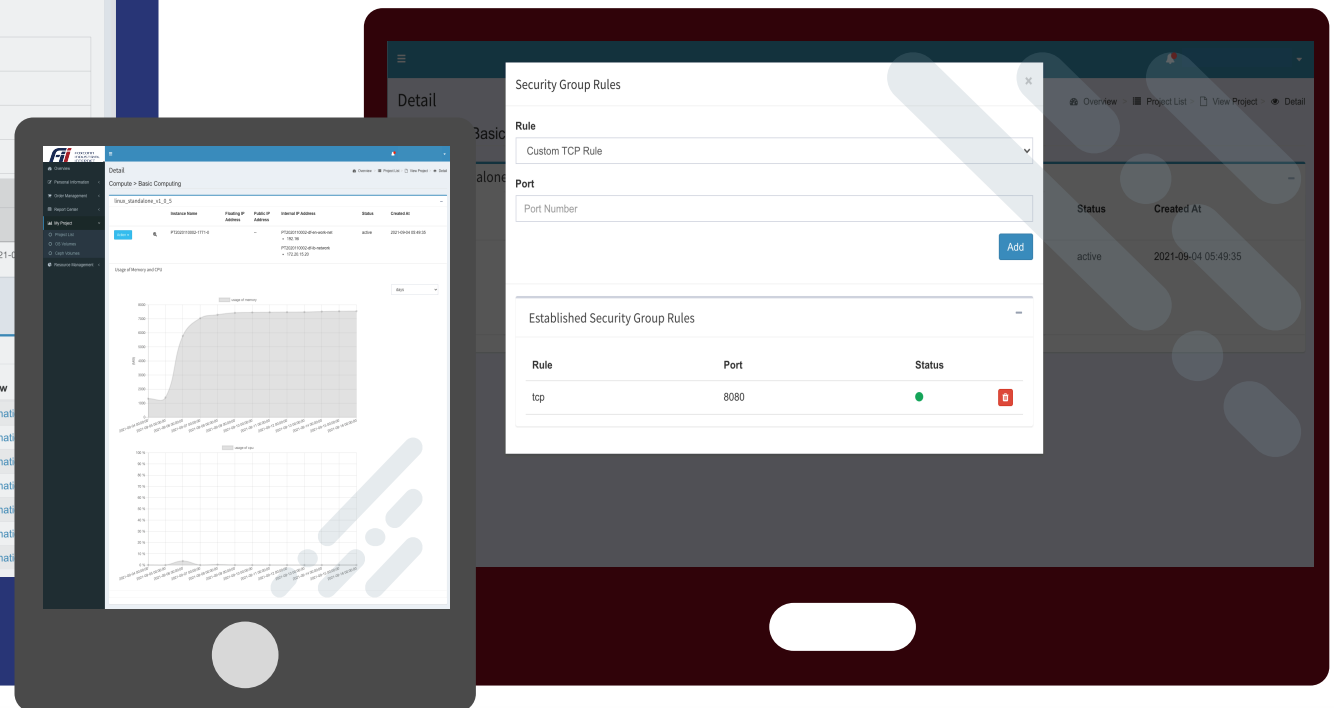
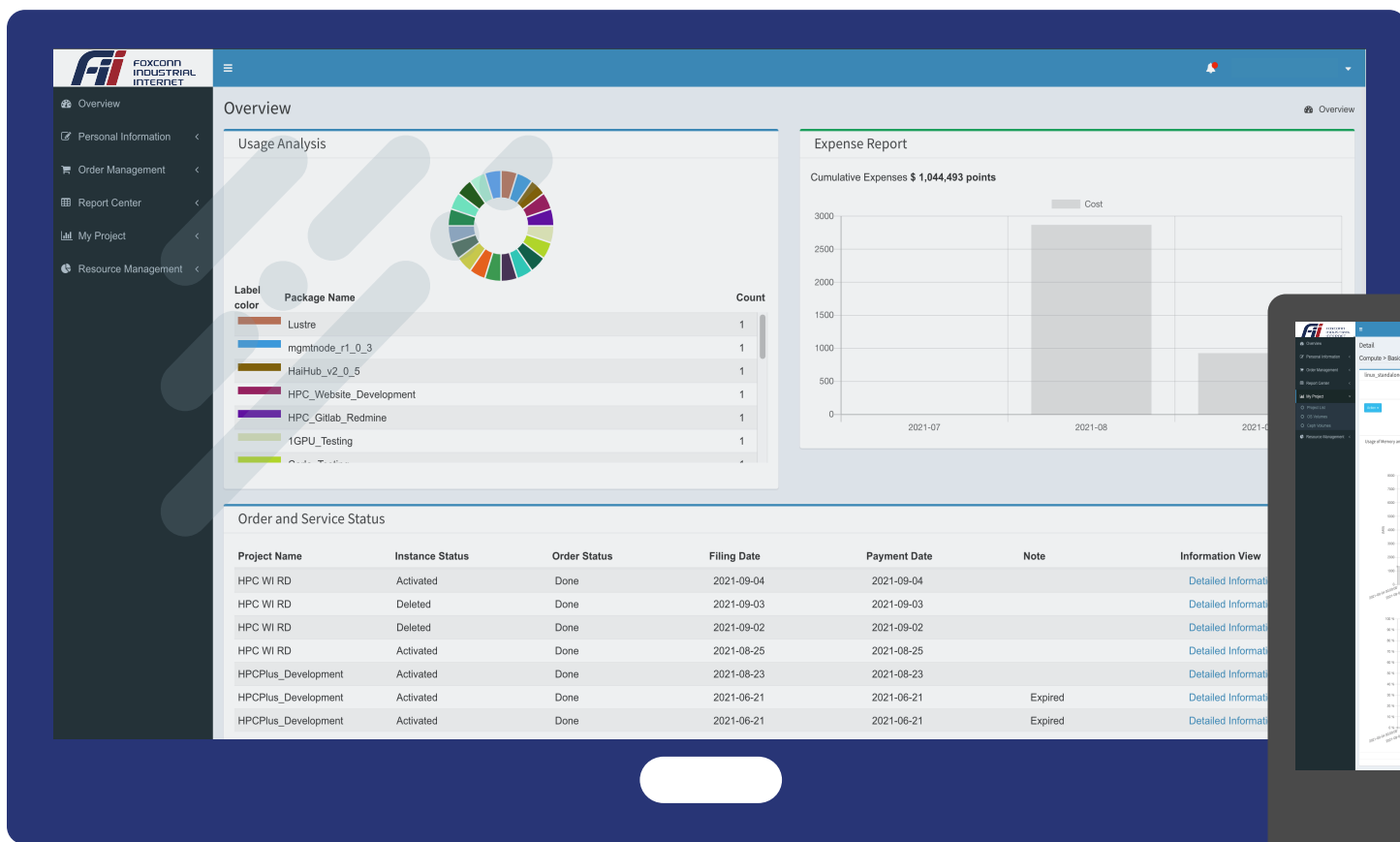
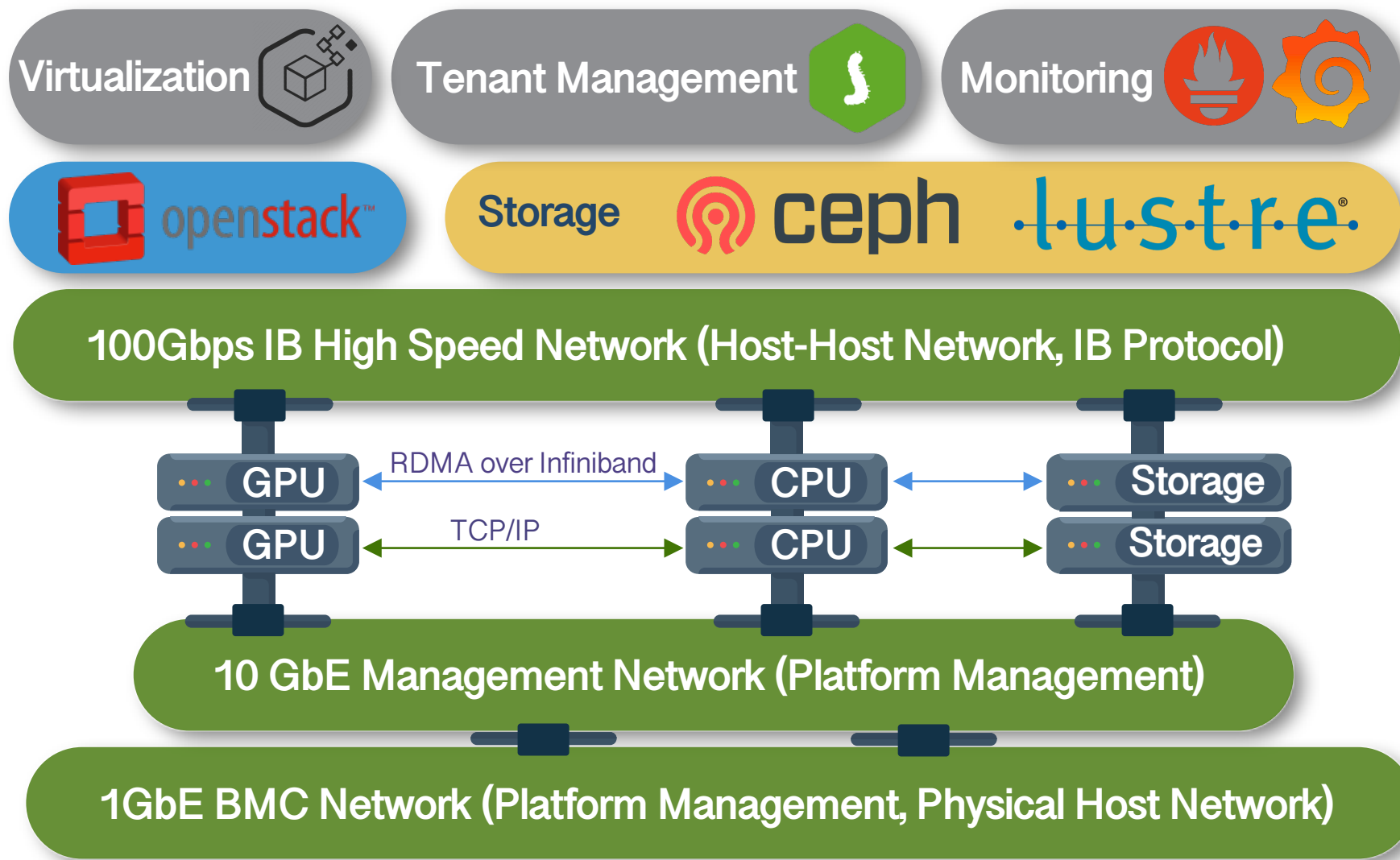
>99.99%



Flexible Deployment



HPC Cloud Architecture



CONTACT US

EMAIL: hpcsales@fii-usa.com

WEBSITE: fii-hpc.com

ADDRESS: 1200I Braun Road
Mount Pleasant
WI 53177