

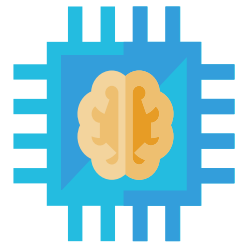


Medical AI Solution

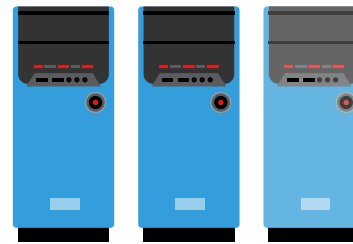
Hospital Pain Points



PACS integration
with AI tools



Training, managing and
deciding AI models



Expanding
computational
resources



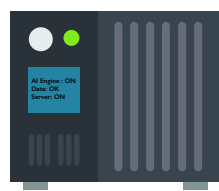
Determining cost
efficiency of
AI-solutions

Solution Features

Rapid Adoption



PACS Integration



EDGE Box



AI-Assisted Diagnosis



AI-Annotation
Learning

Cloud Cooperative Mechanism



AI Training
& AutoML

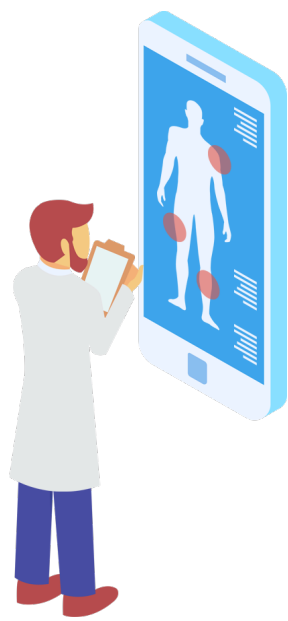


Workspace
Management

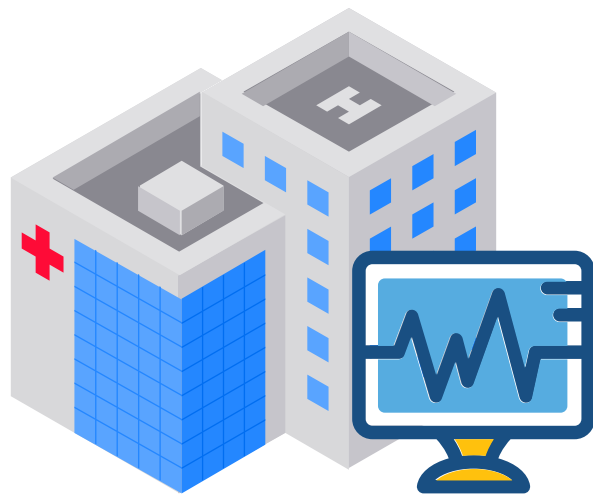


AI Model Management

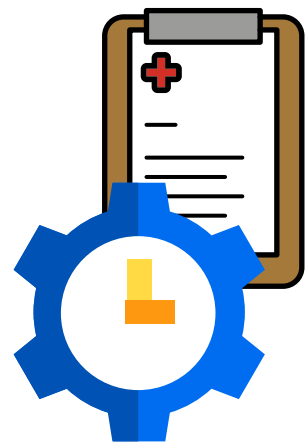
Applications



Telemedicine



ER Rapid Diagnosis



Patient Scheduling Optimization

Solution Details

User Interface

- AI-Assisted Diagnosis
- AI Model Pipeline Configuration
- Data Processing and Analysis
- AI-Assisted Labeling
- AI-Retraining
- Data Management
- User Management

Continuous Monitoring Interface

- Patient Vital Sign Monitoring
- Automated AI Inference System

Cloud Support

- On-Demand AI Training
- AutoML
- AI-Development Workspace
- AI Model Management and Deployment

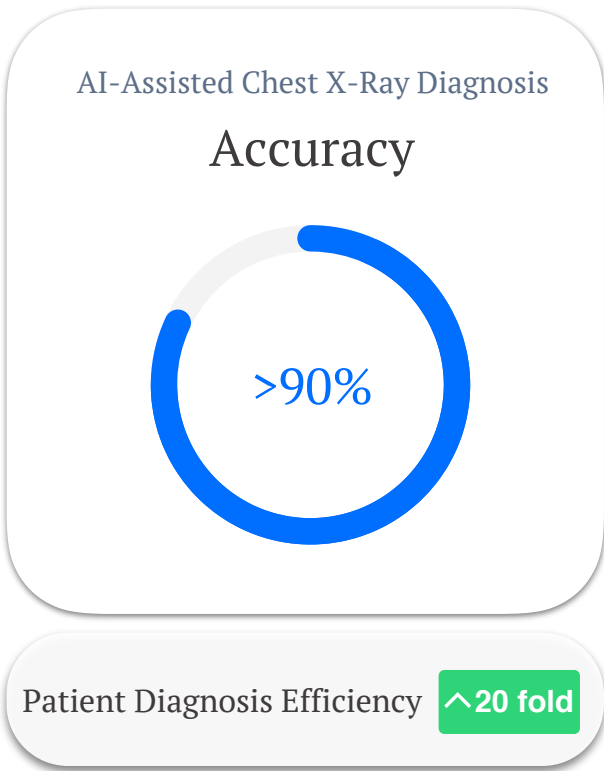
Model Repository

- CheXNet (detect up to 14 thoracic diseases)
- COVID-19 Chest X-Ray Classification
- Pneumonia Localization
- Pill Recognition

Solution Benefits

Foxconn’s Medical AI solution offers the following competitive advantages:

- Improved processing efficiency with AI-Assisted Diagnosis.
- Compatibility with HIS to easily integrate into current patient workflows.
- On-site EDGE server to provide a quick, cost-effective, and secure solutions.
- Utilize training and development tools with our Cloud Cooperative Mechanism (CCM).



Framework



CONTACT US

EMAIL: hpcsales@fii-usa.com

WEBSITE: fii-hpc.com

ADDRESS: 1200I Braun Road
Mount Pleasant
WI 53177